

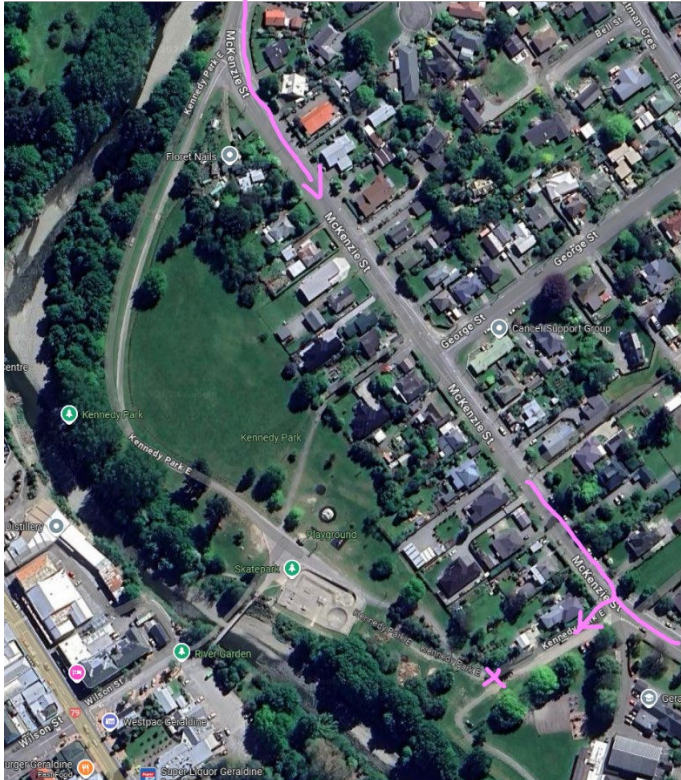
Holiday Programmes

Bush Day

Schedule

Activity	Meeting Location	Drop Off	Pick Up
Bush Day	Kennedy Park, Geraldine *	8:30am	4pm

**If you'd like to drop off/pick up from our Peel Forest Base instead, please get in touch to arrange.*



Locations and activities are subject to weather conditions. We will get in touch if there are any necessary changes to this schedule.

Activities Overview

Bush Day

Go bush! Explore remnants and regrowth of an ancient forest right here in South Canterbury while learning some basic skills such as bush identification, trap and shelter building or navigation in Peel Forest.

Age requirements:

Appropriate for ages 8+

On the Day Contact

Office – 03 696 3838 – Calls only

Duty Phone – 020 4155 2603 – Calls only

Gear List

Compulsory

- Lunch and snack
- Sunscreen/sunglasses/cap
- Drink bottle
- Spare warm layers
- Backpack
- Activewear (*no cotton*)
- Raincoat (*we'll go rain or shine*)
- Well-fitting lace-up trainers
- **Any personal medication**

We Will Provide

- All activity specific/technical gear required!
- Any additional *extra warm* gear

Optional

- Camera
- Thermal leggings (highly recommended on cooler days)
- Gaiters for bush
- Puffer jacket
- Cap
- Beanie